



INTRODUCTION TO GREP





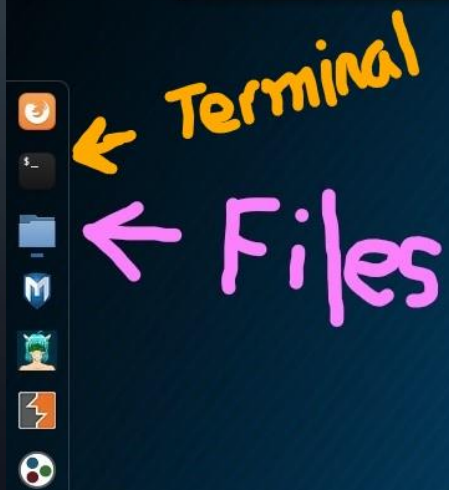
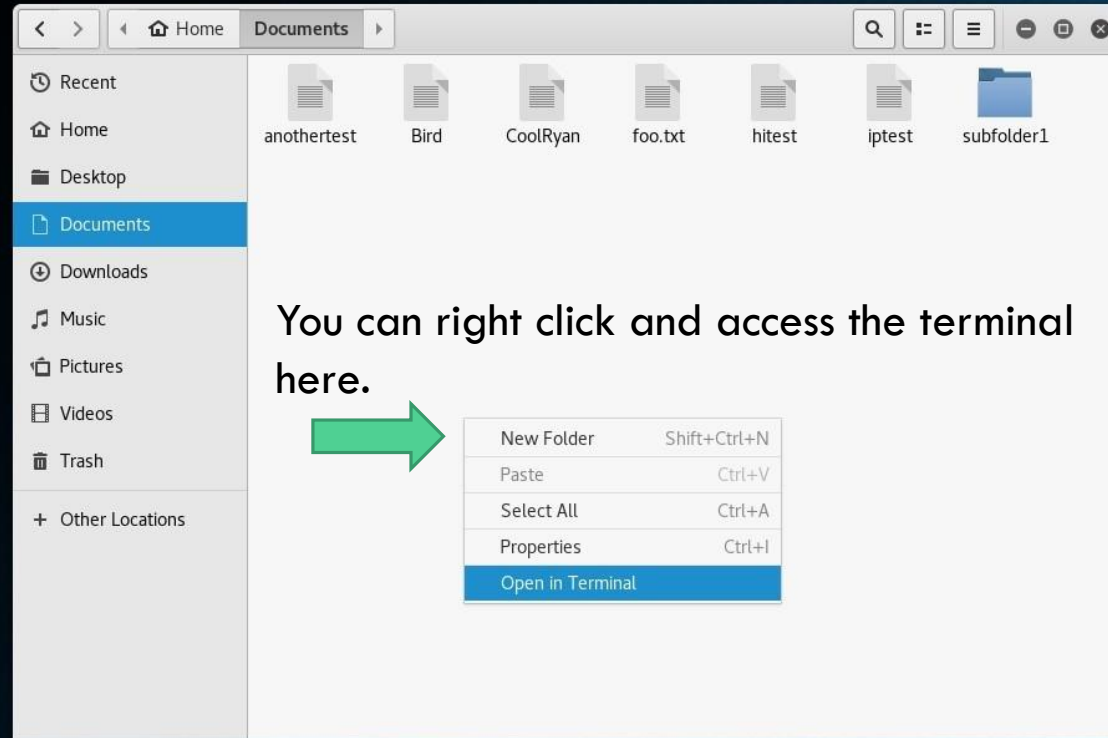
GREP

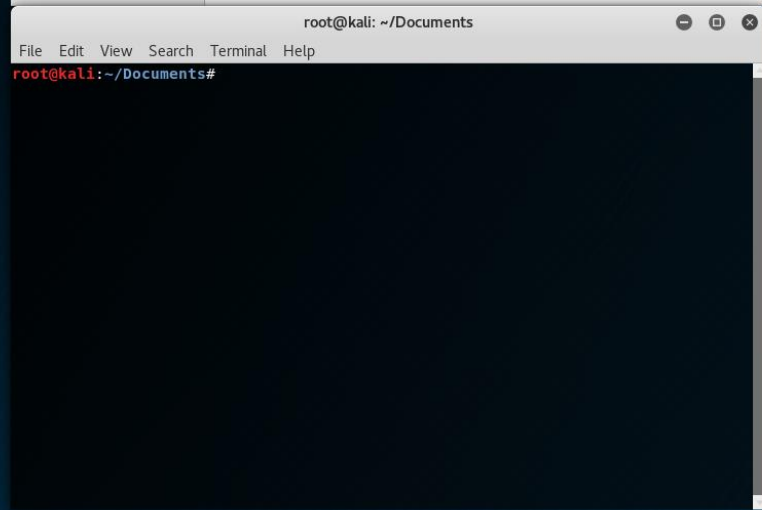
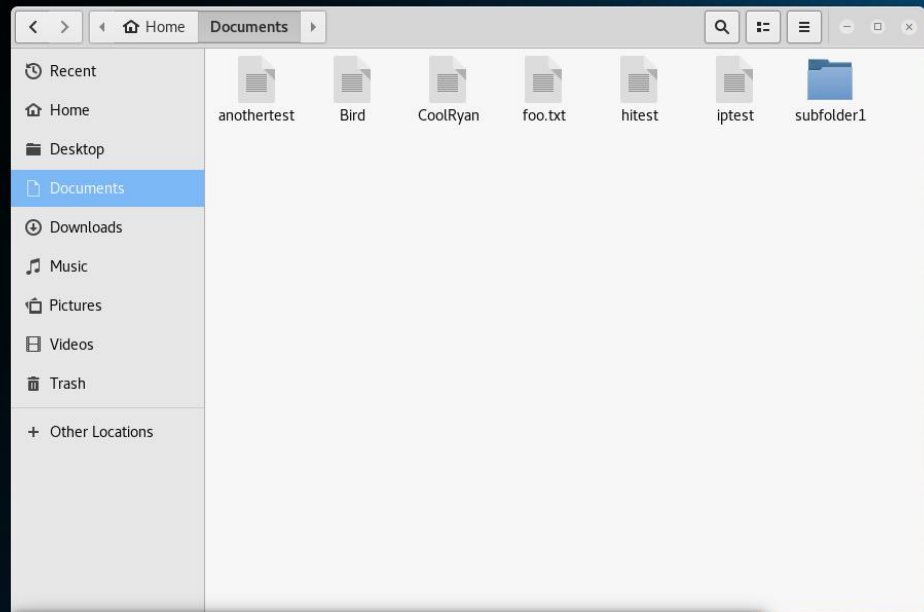
WHERE DO I FIND GREP?

KALI LINUX

- Grep was originally developed for the Unix operating system, but later available for all Unix-like systems.
- You can install Kali Linux as the primary boot, dual boot, or on a virtual machine. Personally, I use Virtualbox to run Kali Linux.
- Once Kali Linux is installed, you can access grep through the terminal window.









GREP

WHAT IS GREP?

- `grep` is a command-line utility for searching plain-text data sets for lines that match a regular expression. Its name comes from the `ed` command `g/re/p` (globally search a regular expression and print), which has the same effect: doing a global search with the regular expression and printing all matching lines.



GREP COMMANDS

COMMON GREP COMMANDS

GREP [OPTIONS] [REGEXP] [FILENAME]

grep -i (case-insensitive search)

grep -c (count)

grep -w (whole-word search)

grep -v (inverted search)

grep --help (brings up help menu)

GREP INTRO VIDEO

- <https://youtu.be/oeydWnRLj14>